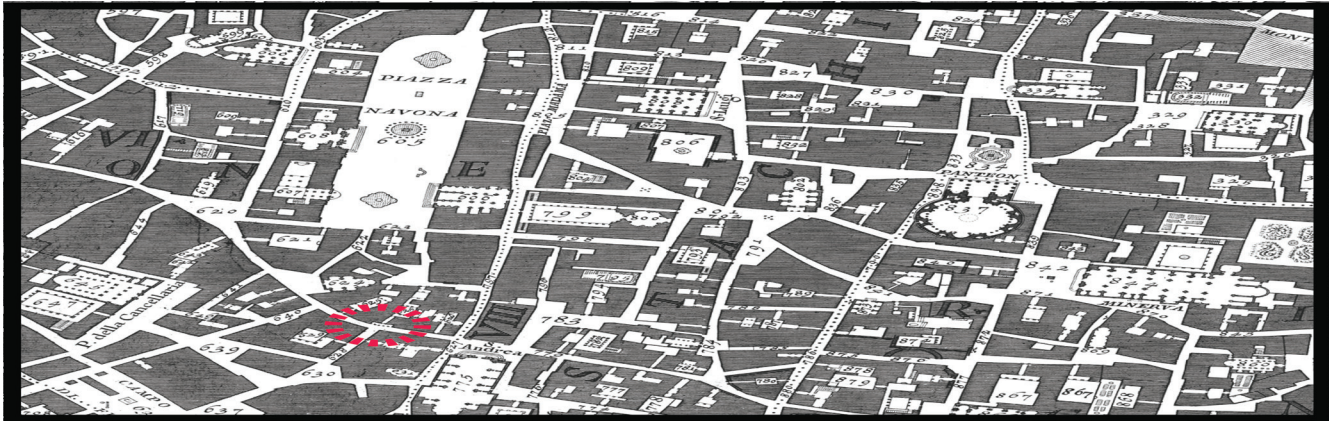
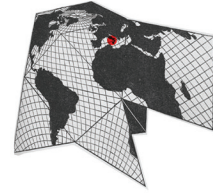


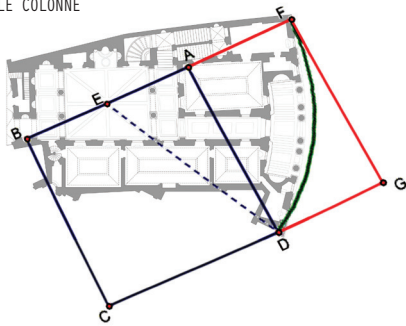
PALAZZI & THE BROTHER MASSIMO



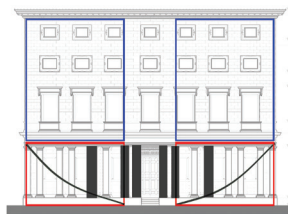
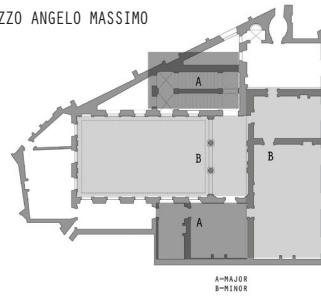
THE PALAZZO MASSIMO IS A RENAISSANCE PALACE IN ROME, ITALY DESIGNED BY BALDASSARRE PERUZZI. PRIOR TO THIS PALACE THERE LAY RUINS OF THE ODEAN, WHICH CONTAINED AN AMPITHEATER USED FOR PLAYS AND MUSICAL COMPETITIONS. THE PALAZZO MASSIMO IS A MONUMENT THAT WILL ALWAYS REMAIN IN GREAT MYSTERY AND ALLUSION DUE TO ITS PERFECT RATIOS THROUGHOUT THE ENTIRE STRUCTURE.

ANALYTICAL DRAWINGS

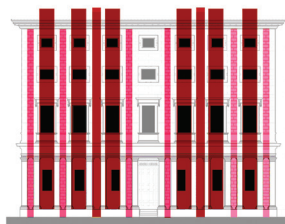
PALAZZO MASSIMO ALLE COLONNE



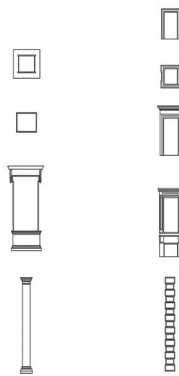
PALAZZO ANGELO MASSIMO



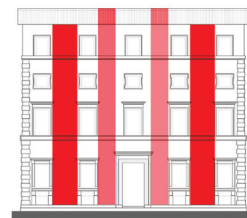
GOLDEN SECTION



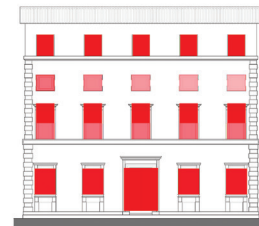
COLUMNS & WINDOWS



STRUCTURE

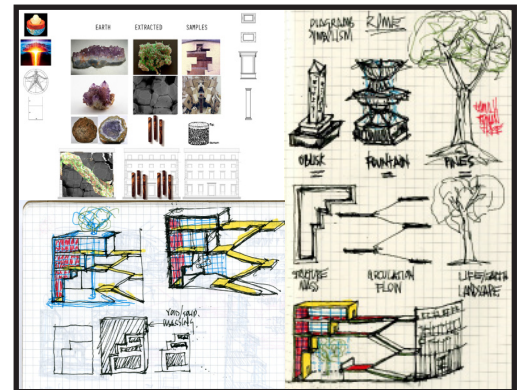
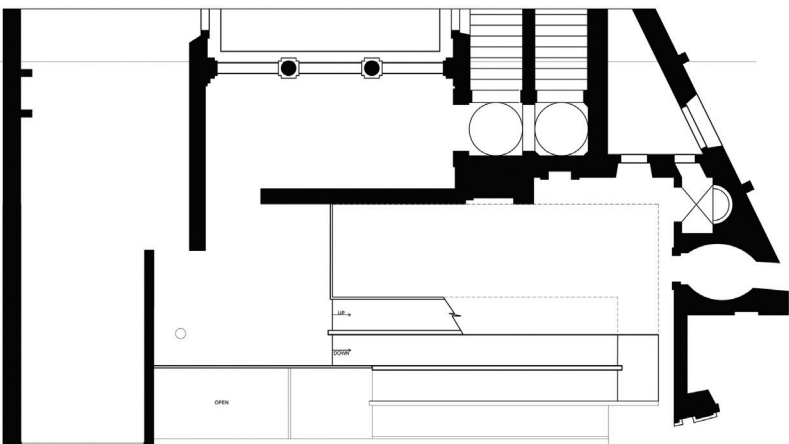
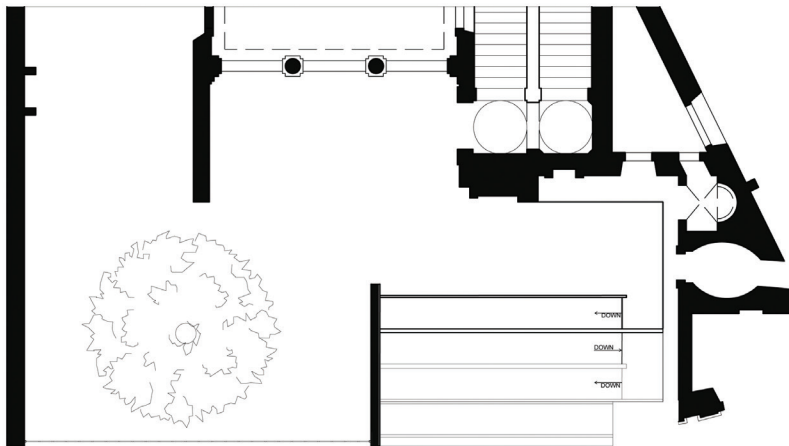
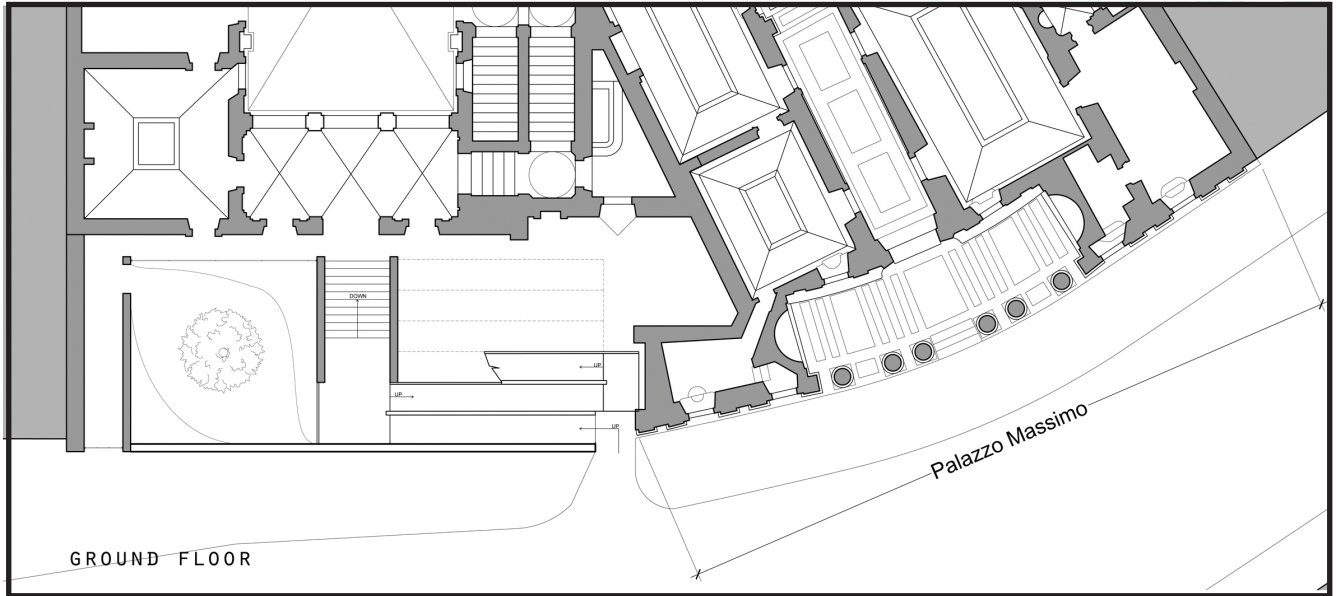


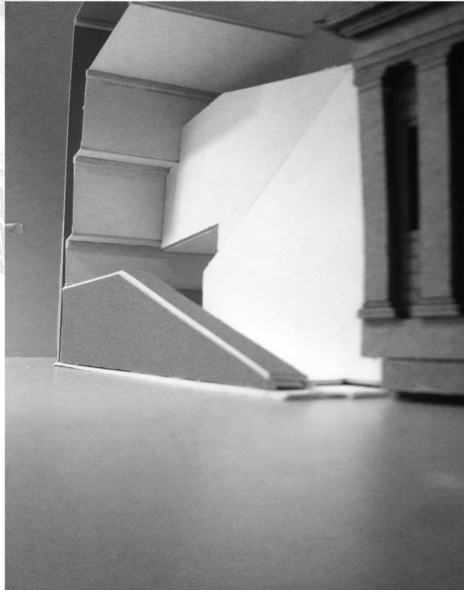
VERTICAL



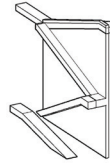
WINDOWS

FLOOR PLANS





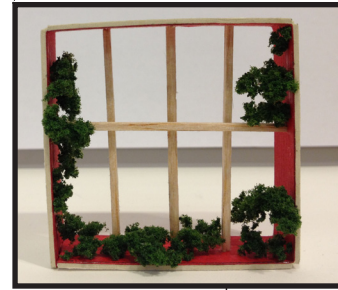
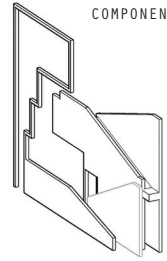
CIRCULATION



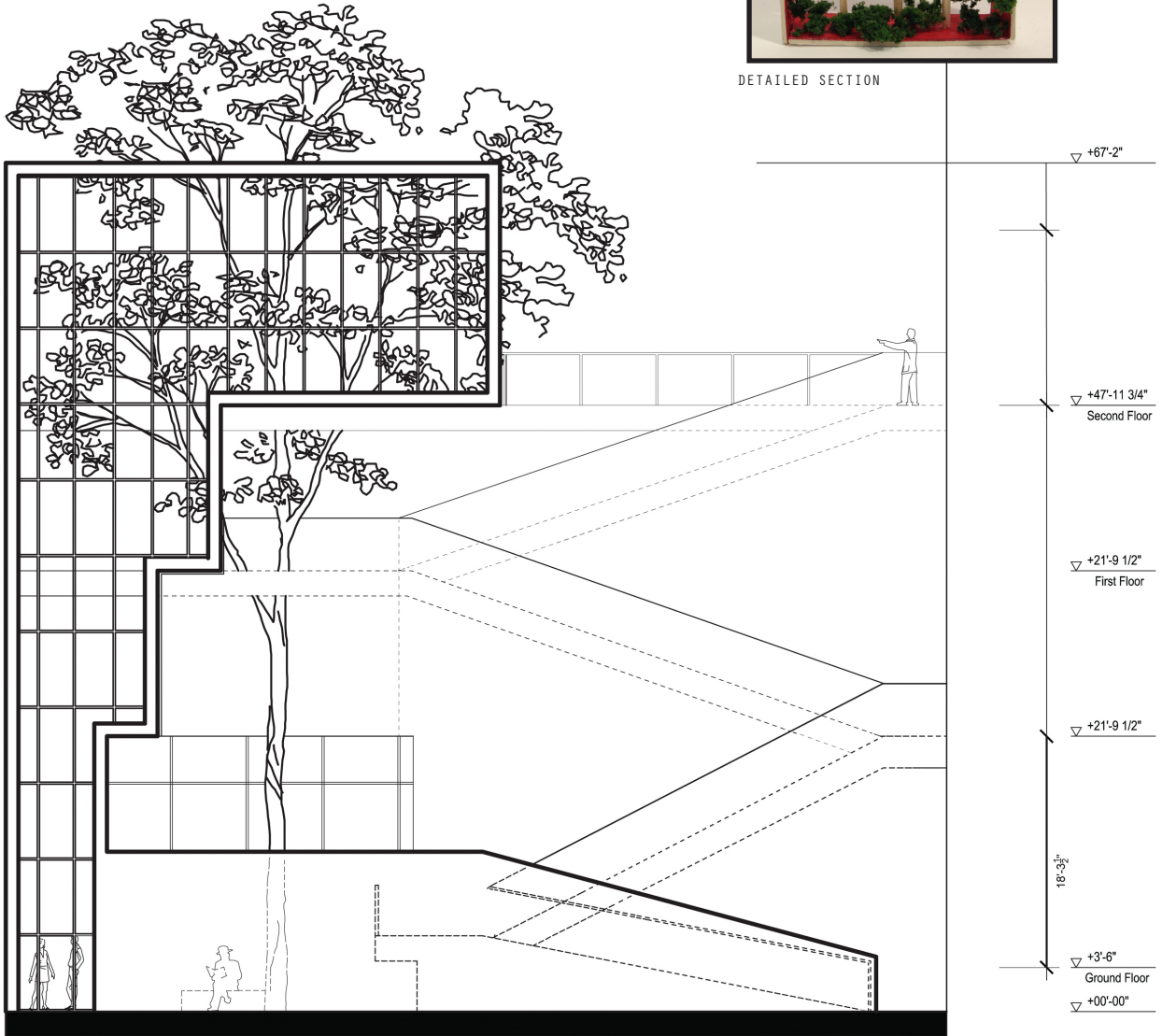
STRUCTURE



COMPONENTS



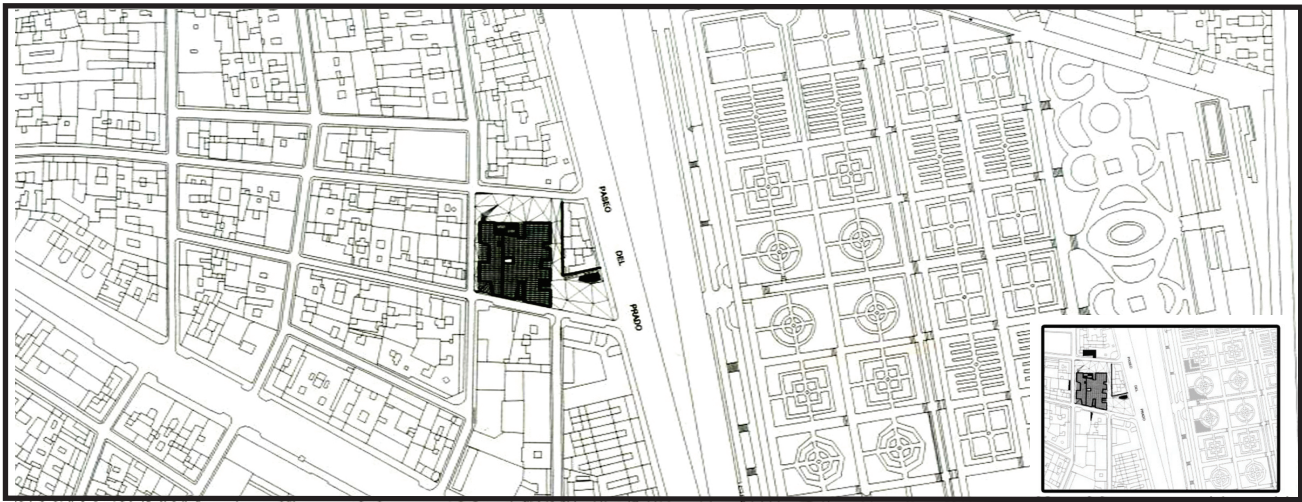
DETAILED SECTION



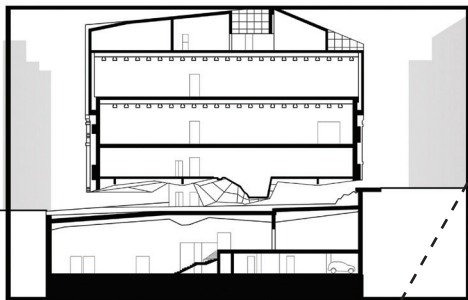
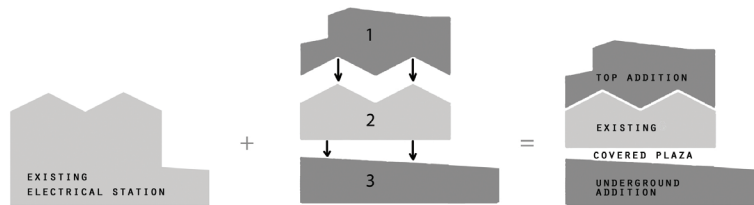
ELEVATION

PROJECT 2

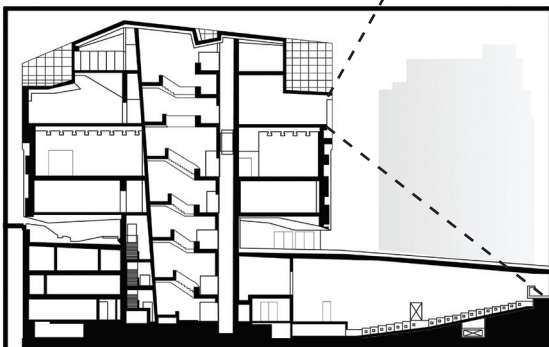
FACADE: A PRECEDENT STUDY CAIXAFORUM



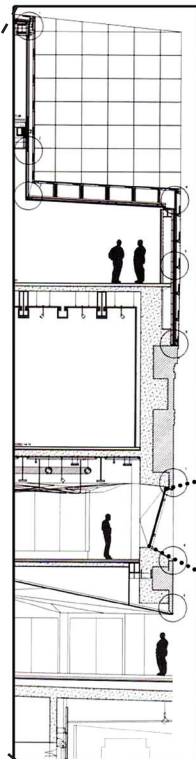
CAIXAFORUM IS LOCATED IN MADRID, SPAIN DONE BY HERZOG DE MEURON. THIS BUILDING HAS A UNIQUE FACADE. ON THE GROUND LEVEL IT GIVES A SENSE OF LEVATATION AND AS YOU ASCEND HIGHER THE FACADE CHANGES INTO THIS PATTERN THAT MIMICS THE OUTSIDE ENVIROMENT GIVING OPEN VIEWS TO ALL FORE SIDES OF THE STRUCTURE.



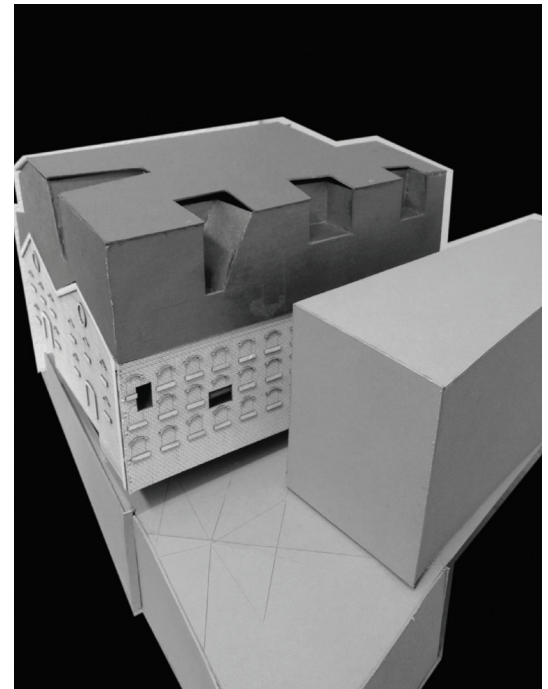
VERTICAL EAST SECTION

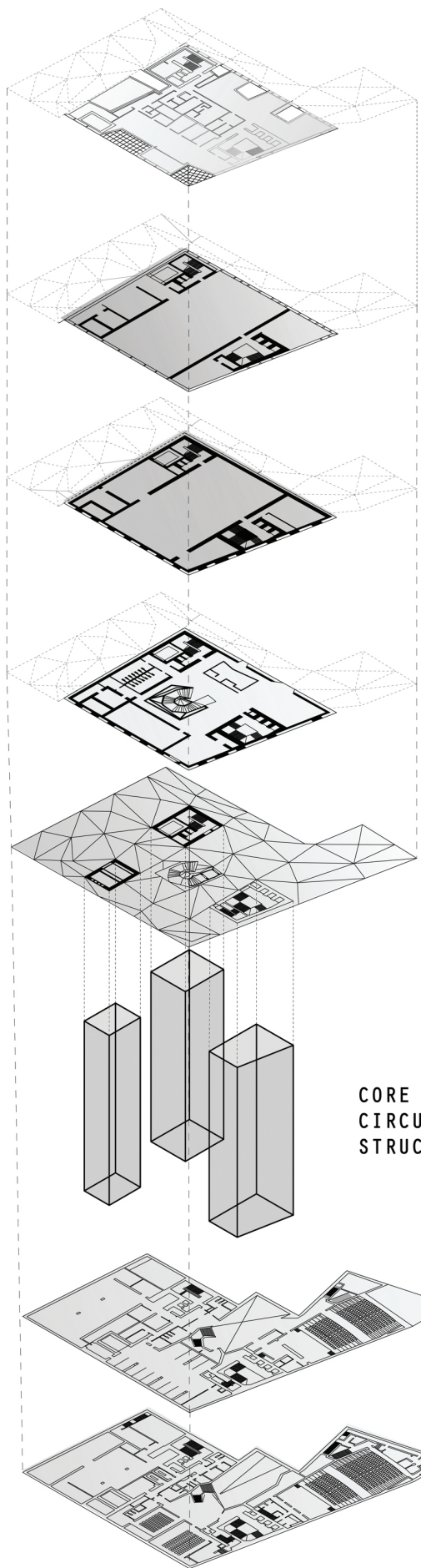


HORIZONTAL SOUTH SECTION



DETAILED SECTION
VIEW FROM EAST





LEVEL +4
/RESTURANT
/OFFICE



LEVEL +3
/EXHIBITION
/LIBRARY



LEVEL +2
/EXHIBITION HALL



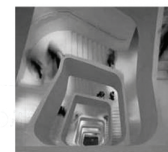
LEVEL +1
/LOBBY
/CAFE



LEVEL 0
/PUBLIC SQUARE

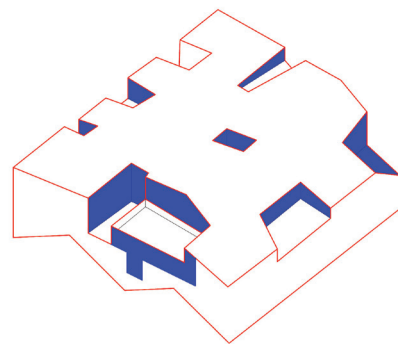
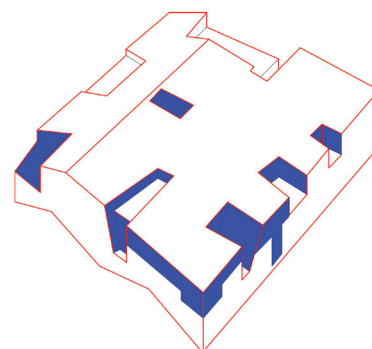
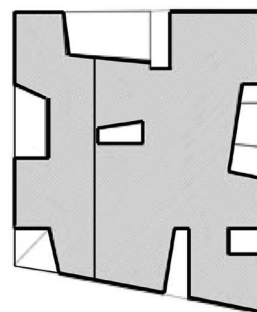
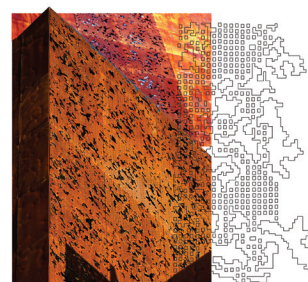


**CORE
CIRCUALTION
STRUCTURE**



LEVEL -1
/MULTIROOM
/STORAGE

LEVEL -2
/PARKING
/FOYER
/AUDITORIUM

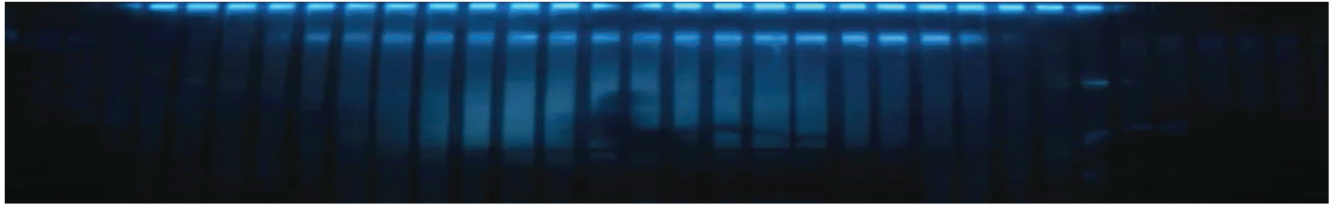


ROOF FACADE SYSTEM

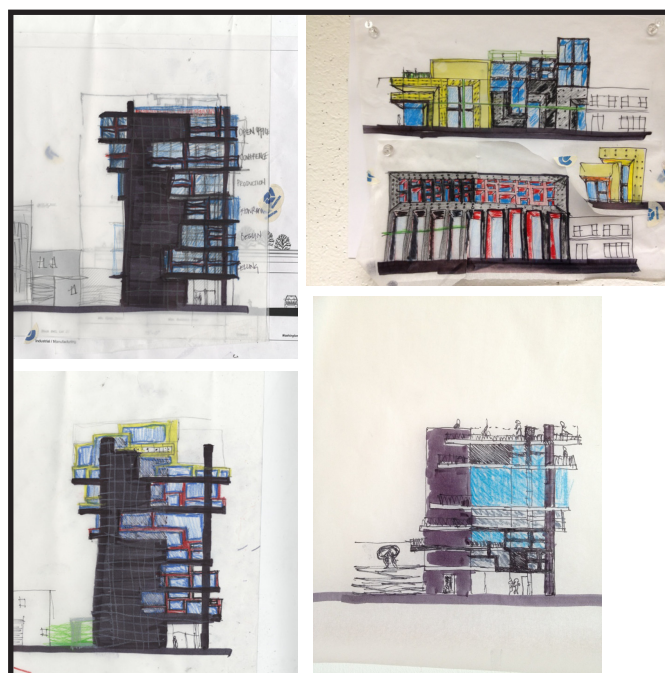
PROJECT 3

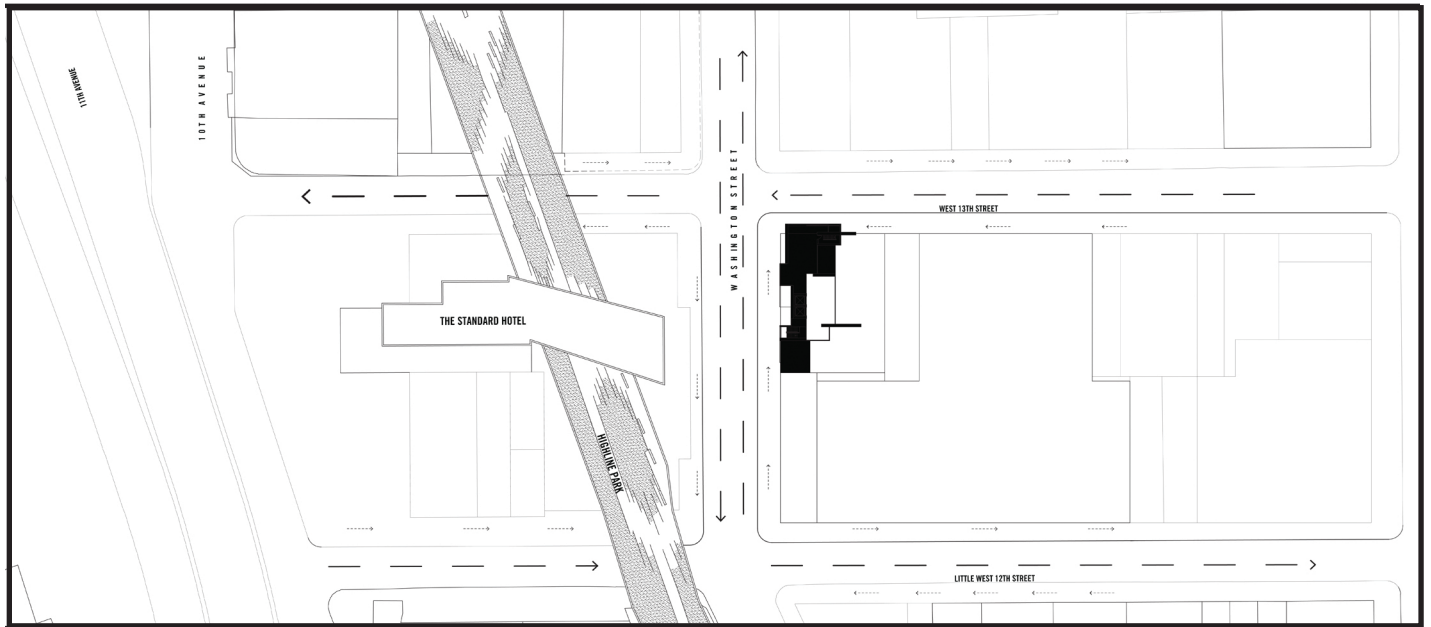
HIGHLINE FASHION

RODARTE

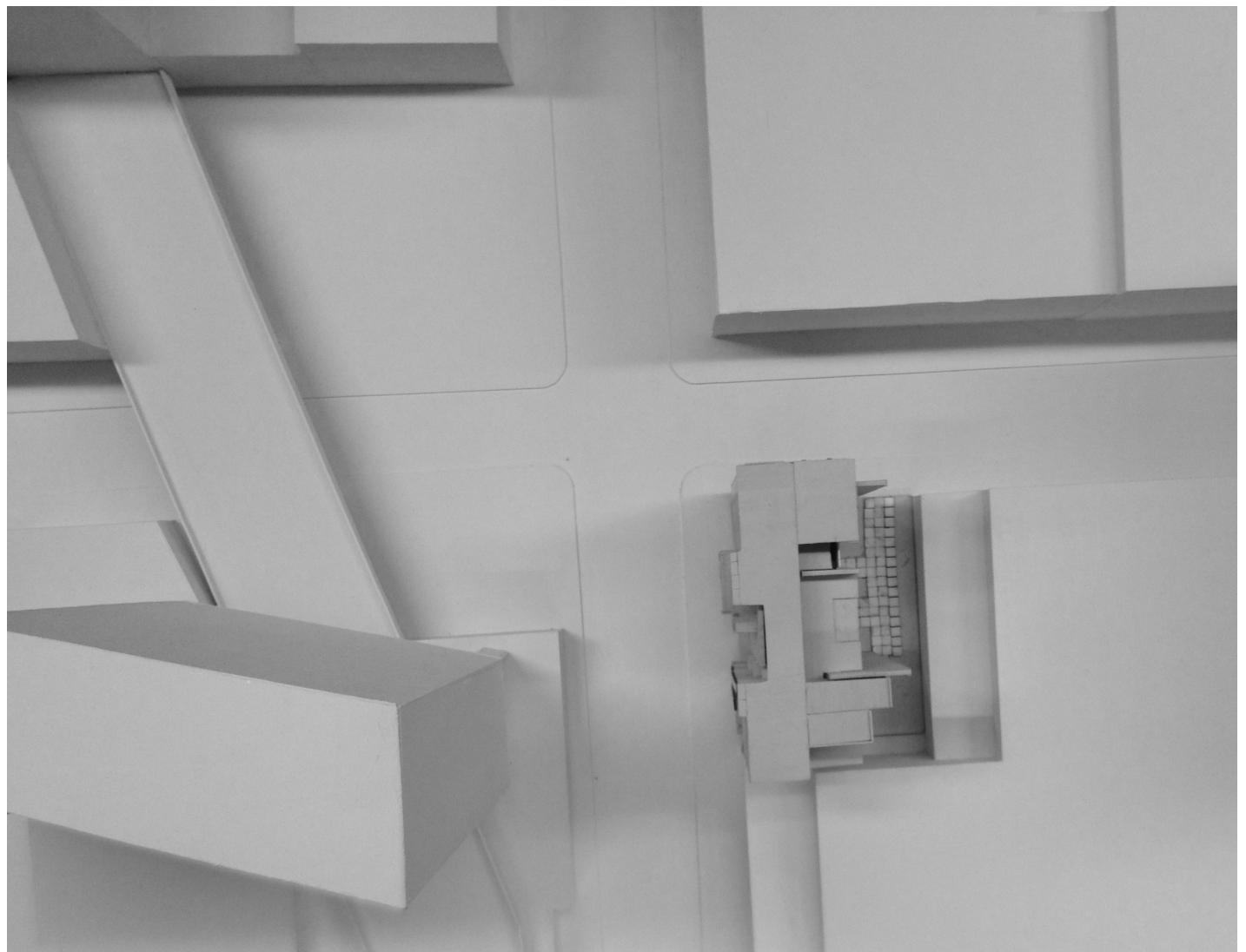


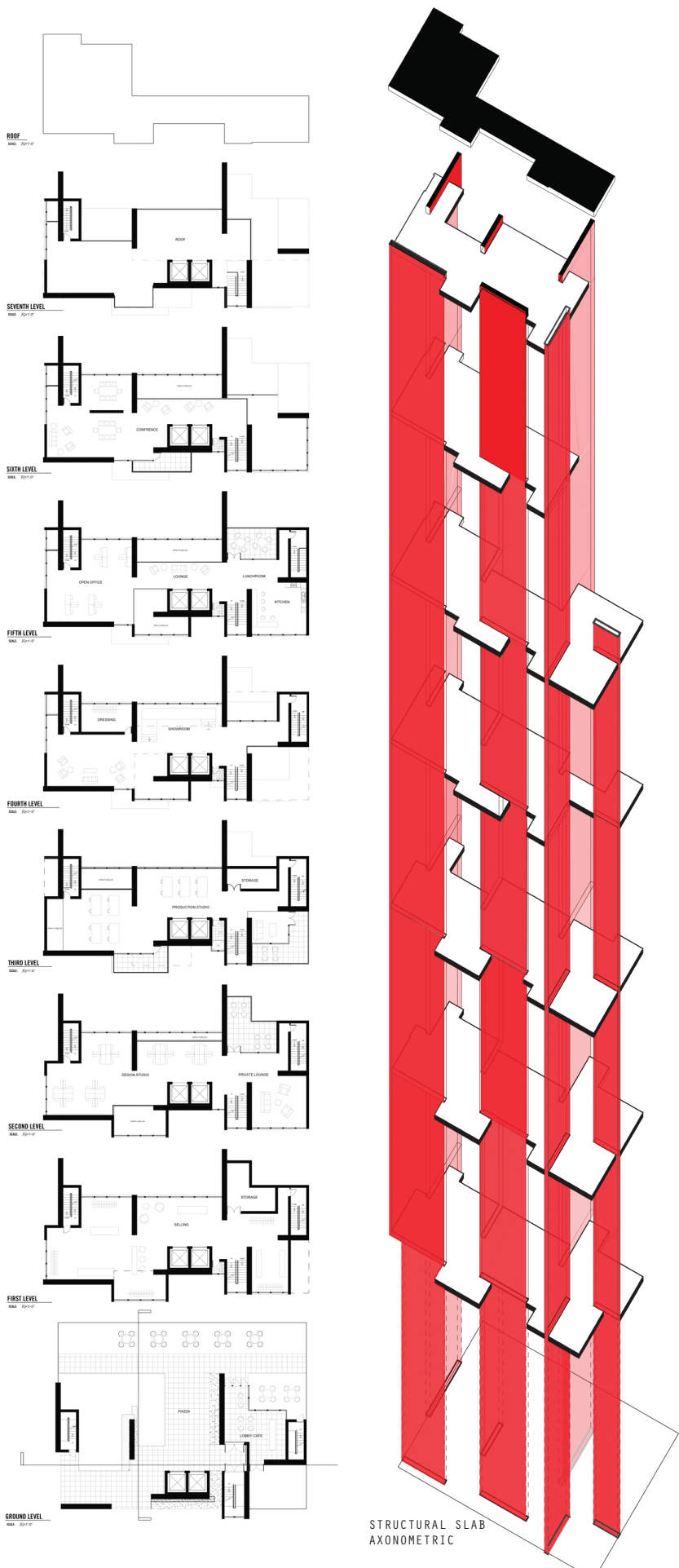
KATE & LAURA MULLEAVY CALIFORNIA BRED SISTERS BEHIND RODARTE. THEY FIND INSPIRATION IN ITALIAN RENAISSANCE ART, HOLLYWOOD FILMS, AND THERE MOTHER. WE MUST ADMIT THAT AT THE SAME TIME, RATHER THAN LOOKING AT THE DRESSES SPECIFIC CHARACTERS ARE WEARING INA FILM, WE USE THE LANDSCAPE AS A REFERENCE



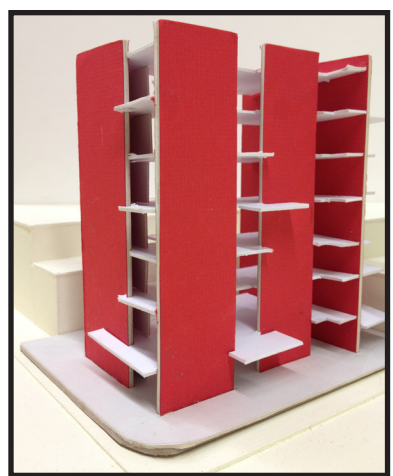


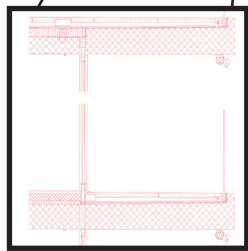
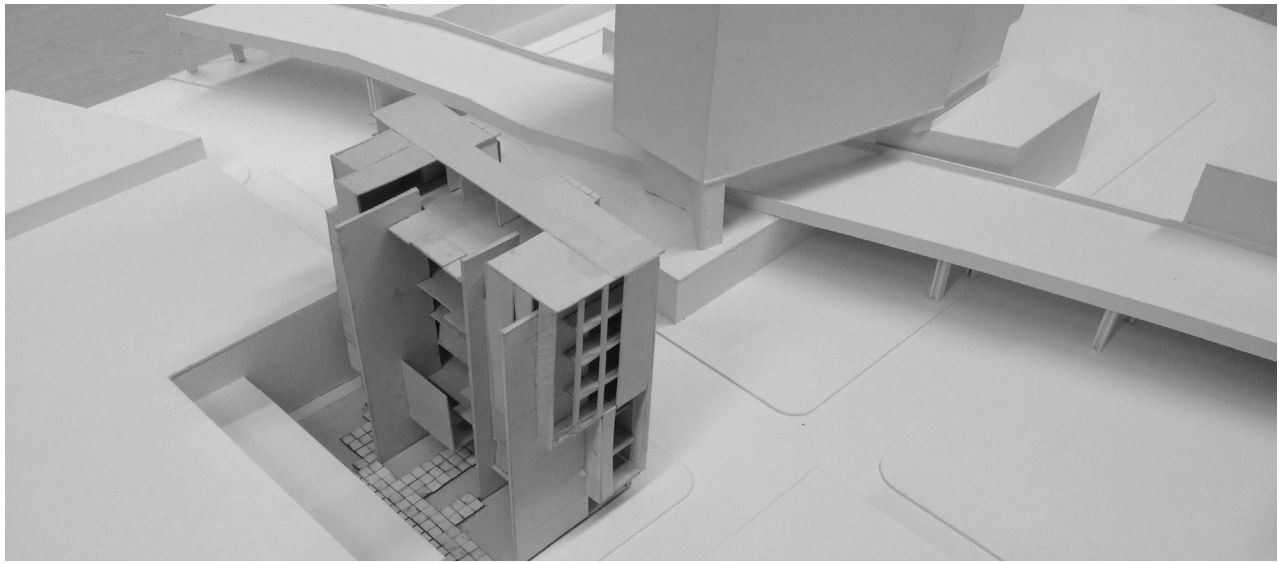
SITE PLAN





STRUCTURAL SLAB
AXONOMETRIC





DETAILED SECTION

